

ARTCC ARGENTINO AD 2.SAVT

NO VALIDO PARA NAVEGACION REAL. ADAPTADO PARA SU UTILIZACION EN UN AMBITO VIRTUAL
SAVT – TRELEW / ALMIRANTE ZAR

AD 2.17 ESPACIO AEREO ATC

Zona de Control:

- | | | |
|-------------------------------------|------------------------|--------|
| 1. Designación: | Zona de Control Trelew | |
| 2. Límites verticales: | FL 035
GND | |
| 3. Clasificación del espacio aéreo: | C | |
| 4. Distintivo de llamada: | TRELEW TORRE | |
| 5. Altitud de transición: | 3000 FT. | |
| 6. Nivel de transición: | QNH de 977 a 994 | FL 050 |
| | QNH de 995 a 1013 | FL 045 |
| | QNH de 1014 a 1031 | FL 040 |
| | QNH de 1032 a 1050 | FL 035 |

Area de Control Terminal:

- | | |
|-------------------------------------|---------------------------------|
| 1. Designación: | Area de Control Terminal Trelew |
| 2. Límites verticales: | FL 075
2000 FT |
| 3. Clasificación del espacio aéreo: | C: FL 075 / 2000 FT |
| 4. Distintivo de llamada: | TRELEW TORRE |

AD 2.18 INSTALACIONES DE COMUNICACIONES ATS

SERVICIO	DISTINTIVO DE LLAMADA	FRECUENCIA	OBSERVACIONES
APP	Trelew Torre	118.700	-

AD 2.19 CARTAS AERONAUTICAS

- | | |
|-----------------------|----------------------|
| - Plano de aeródromo: | SAVT.APT |
| - Cartas IAC: | SAVT.IAC NO.1 RWY 24 |
| | SAVT.IAC NO.2 RWY 24 |
| | SAVT.IAC NO.3 RWY 24 |
| | SAVT.IAC NO.4 RWY 06 |
| | SAVT.IAC NO.5 RWY 06 |

NOTA: Véase AD 2.SAVY PUERTO MADRYN - EL TEHUELACHE debido a que Trelew Torre es responsable de prestar el servicio de control de aproximación transfiriendo la responsabilidad de los tránsitos a Madryn Torre en Final de Pista en Uso o aeródromo a la vista.

(DEJADO EN BLANCO INTENCIONALMENTE)

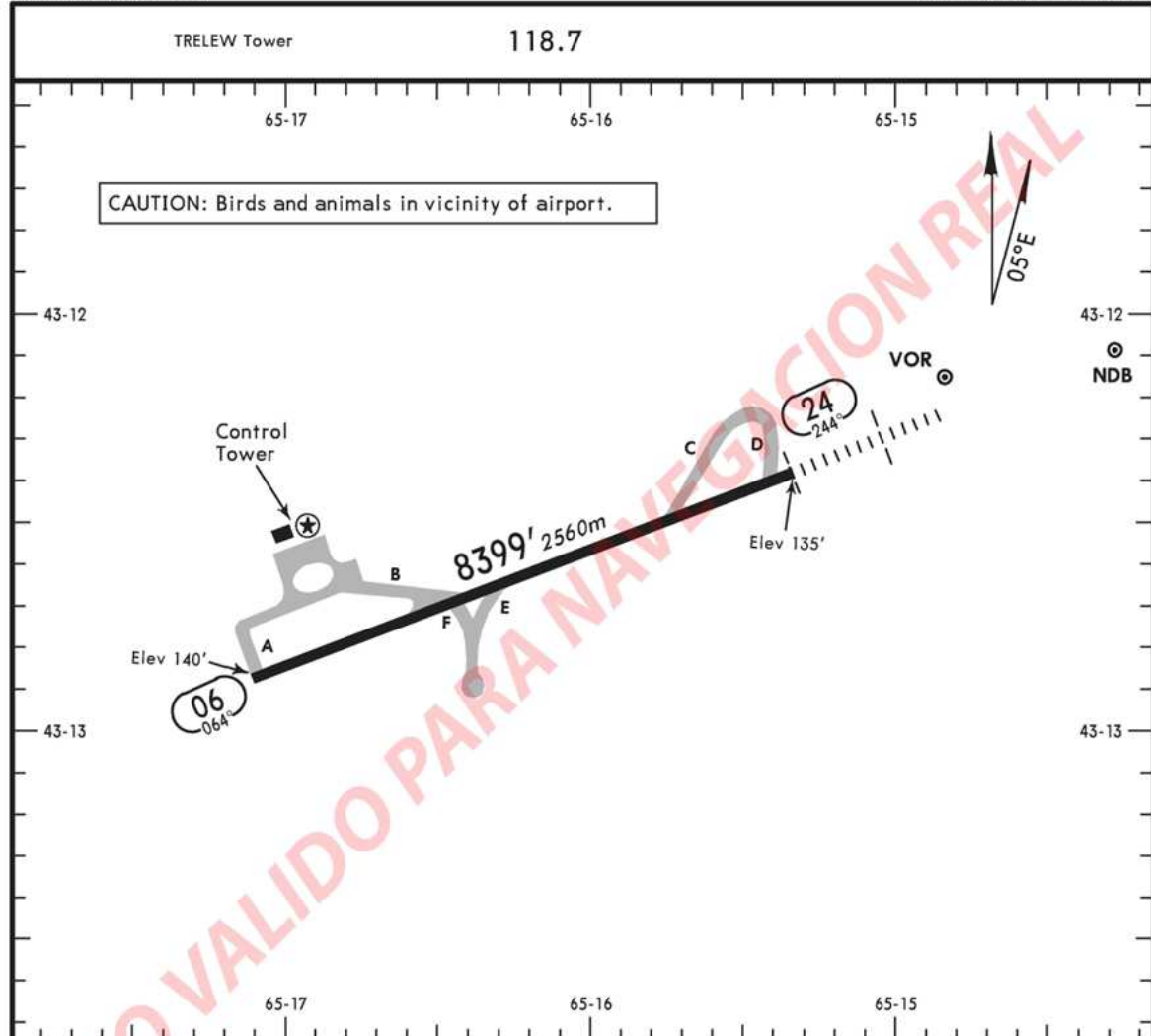
APT

SAVT

Apt Elev 140'
S43 12.6 W065 16.2

TRELEW, ARGENTINA

ALMIRANTE ZAR

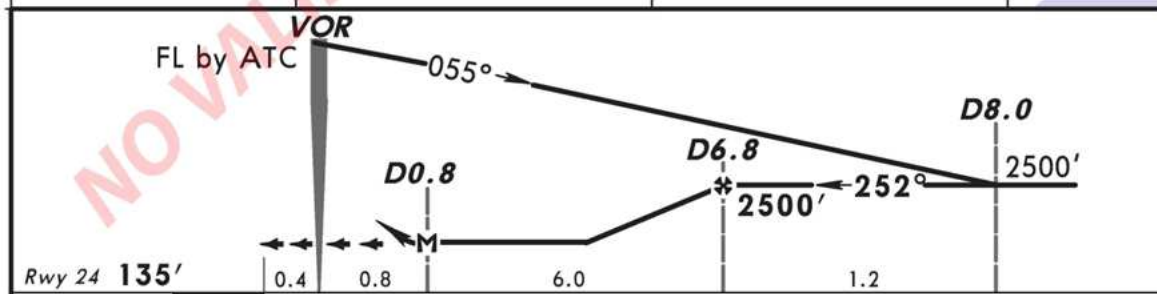


ADDITIONAL RUNWAY INFORMATION

RWY		USABLE LENGTHS		TAKE-OFF	WIDTH
		LANDING BEYOND			
		Threshold	Glide Slope		
06	RL				148'
24	RL SALS AVASI				45m

The diagram illustrates a complex instrument approach procedure for TRELEW (D 115.1). Key features include:

- 13 DME Arc:** A large arc centered at the TRELEW station, with segments labeled 3000 and 13 DME Arc.
- Altitudes:** Various minimum altitudes are specified, such as 676' (MVA), 1600' (MDA), and 800' (DA).
- Navigation Aids:** The chart includes a VORTAC station (TRELEW) and a TIS (Traffic Information Service) area.
- Approach Path:** The path starts from the south, passes through a series of waypoints (D0.8, D6.8, D8.0), and ends at the runway (Rwy 09).
- Angles and Distances:** Numerous angles (e.g., 032°, 065°, 072°) and distances (e.g., 3000, 5.0, 2500) define the geometry of the approach.



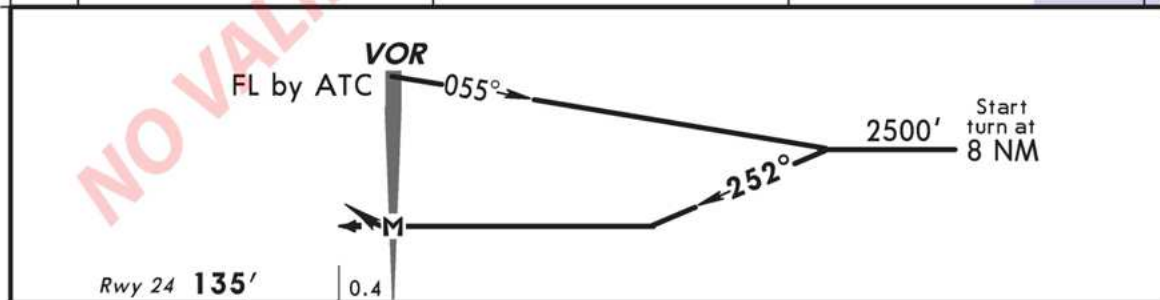
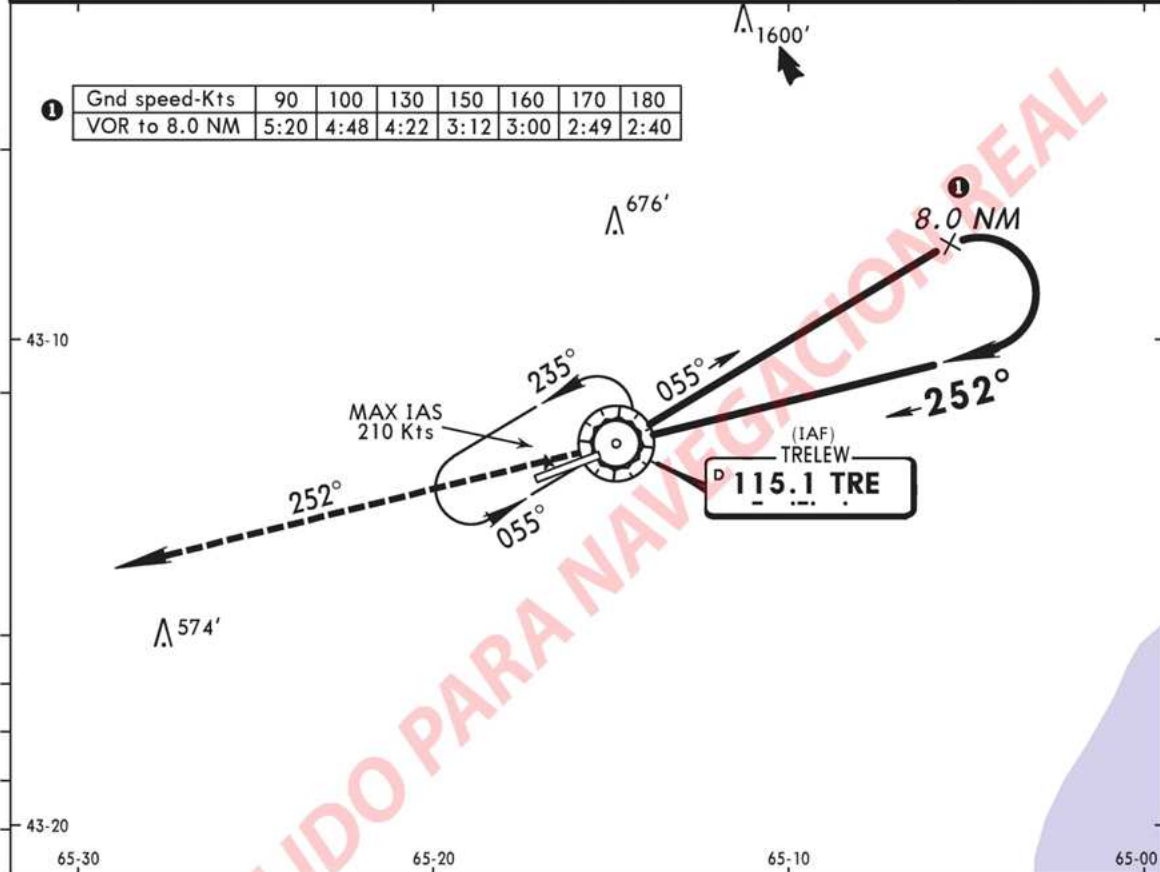
Gnd speed-Kts	70	90	100	120	140	160
MAP at D0.8 or D6.8 to MAP 6.0	5:09	4:00	3:36	3:00	2:34	2:15

STRAIGHT-IN LANDING RWY 24			CIRCLE-TO-LAND	
MDA(H) 560' (425')			Not Authorized South of Rwy 06/24	
		ALS out	Max Kts.	MDA(H)
A	2000m	2400m	100	720' (580') - 2000m
B			135	720' (580') - 2800m
C			180	810' (670') - 3700m
D	2400m	2800m	205	1300' (1160') - 4600m

SAVT
ALMIRANTE ZAR

TRELEW, ARGENTINA
No. 2 VOR Rwy 24

				TRELEW Tower	
				118.7	
VOR TRE 115.1	Final Apch Crs 252°	No FAF	MDA(H) 560' (425')	Apt Elev 140' Rwy 24 135'	<div><div>3000'</div><div>MSA TRE VOR</div></div>
MISSED APCH: Climb on TRE VOR R-252 to 3000' and follow instructions from CONTROL.					
Alt Set: hPa	Rwy Elev: 5 hPa	Trans level: By ATC	Trans alt: 3000'		

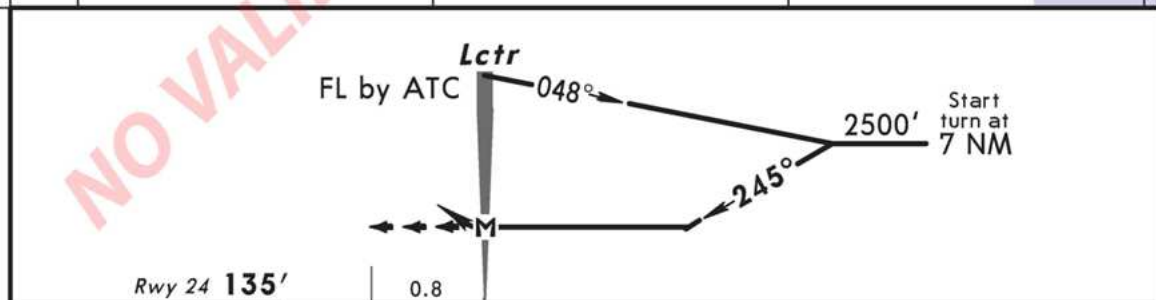
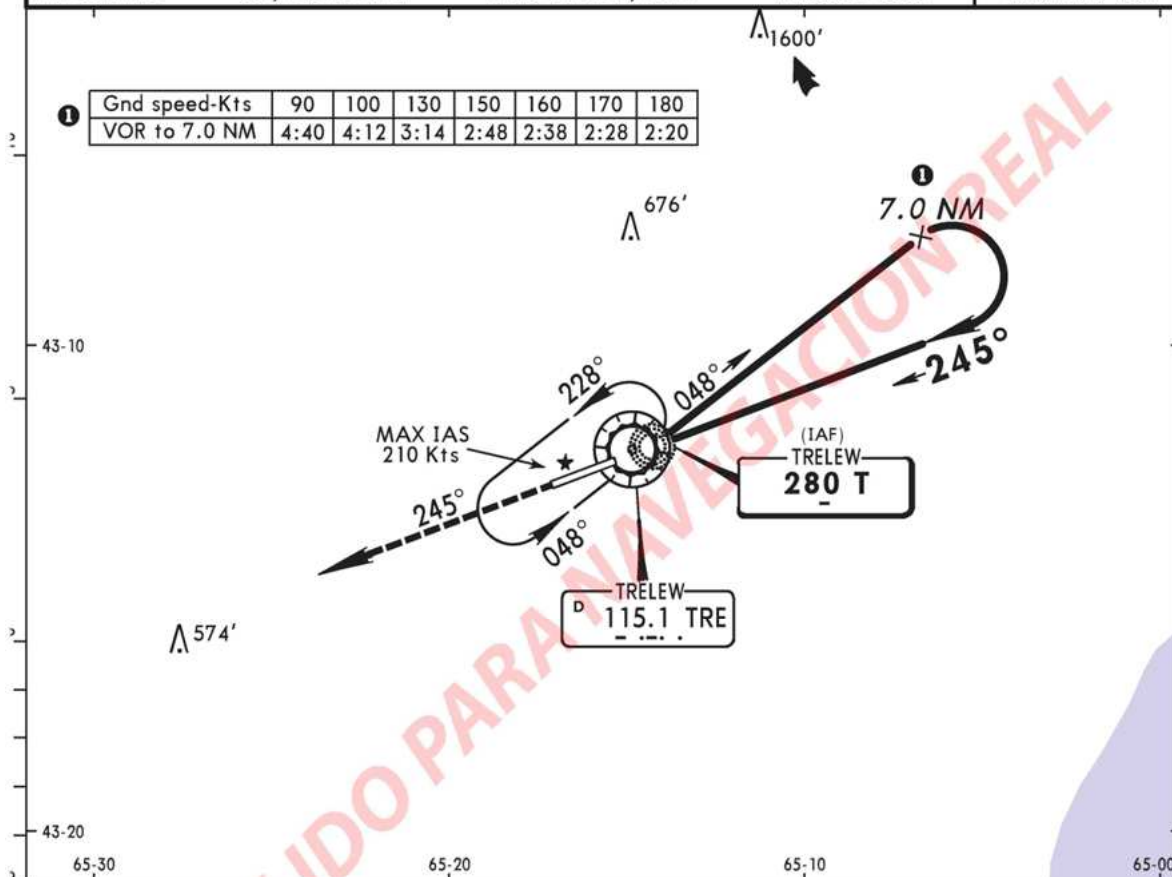


				AVASI SALS	3000'	TRE on 115.1 R-252
MAP at VOR						

STRAIGHT-IN LANDING RWY 24				CIRCLE-TO-LAND	
MDA(H) 560' (425')				Not Authorized South of Rwy 06/24	
		ALS out	Max Kts	MDA(H)	
A			100	720' (580') - 2000m	
B	2000m	2400m	135	720' (580') - 2800m	
C			180	810' (670') - 3700m	
D	2400m	2800m	205	1300' (1160') - 4600m	

SAVT
ALMIRANTE ZARTRELEW, ARGENTINA
No. 3 LCTR Rwy 24

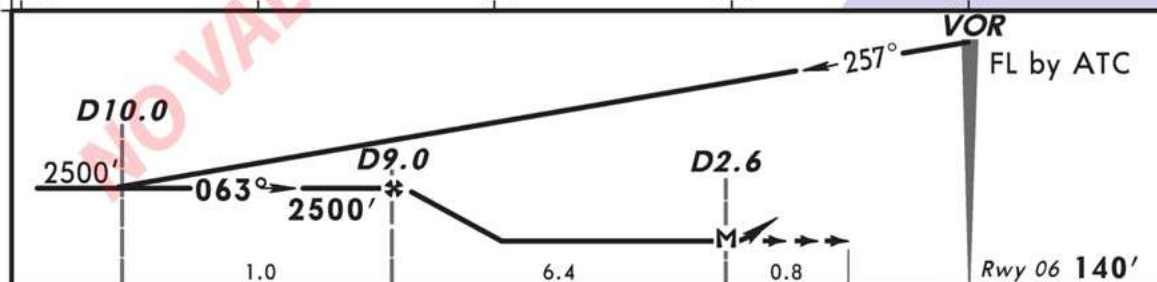
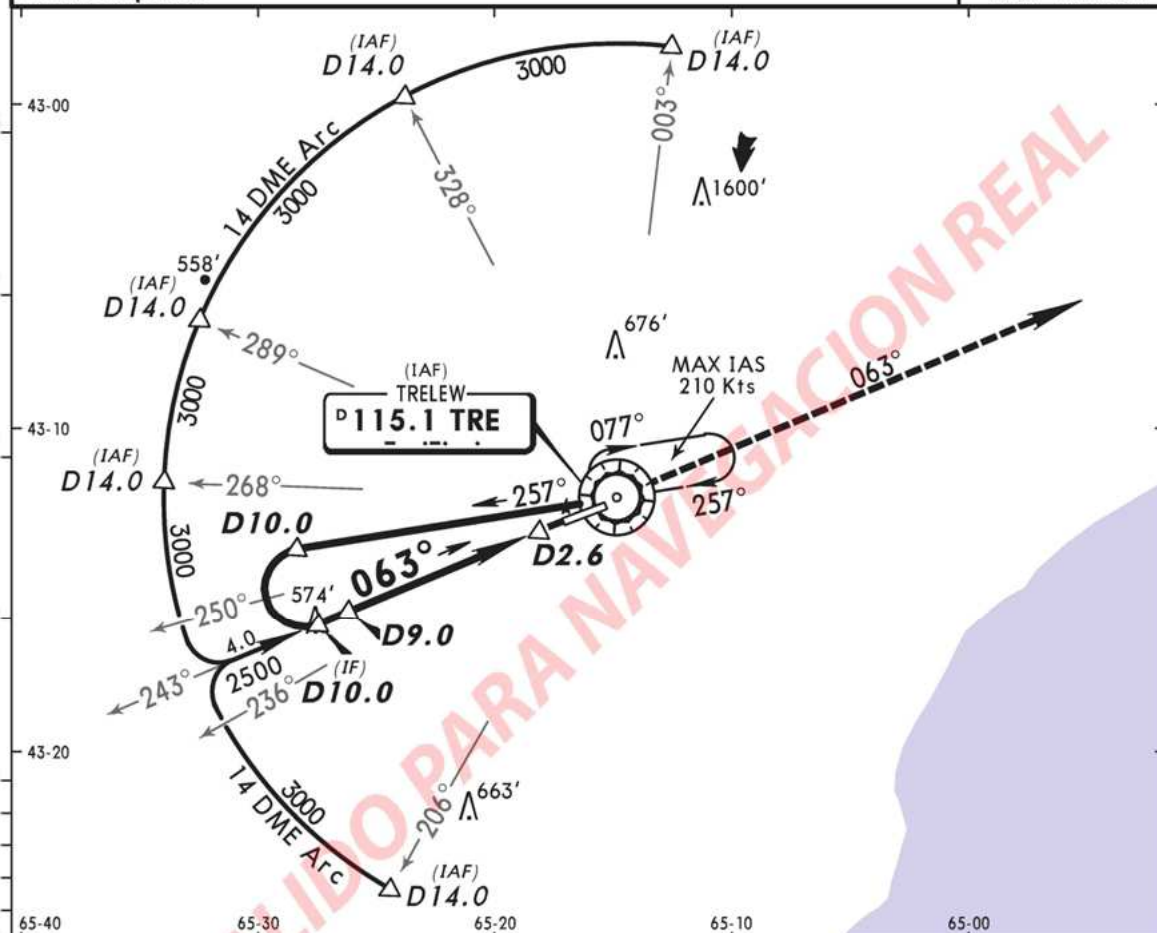
				TRELEW Tower	
				118.7	
Lctr T 280	Final Apch Crs 245°	No FAF	MDA(H) 560' (425')	Apt Elev 140' Rwy 24 135'	<div style="border: 1px solid black; border-radius: 50%; width: 100px; height: 100px; display: flex; align-items: center; justify-content: center;">3000'</div>
MISSED APCH: Climb on 245° bearing from T Lctr to 3000' and follow instructions from CONTROL.					
Alt Set: hPa		Rwy Elev: 5 hPa	Trans level: By ATC		Trans alt: 3000'



				AVASI SALS		3000'	T on 280 245°
MAP at Lctr							
STRAIGHT-IN LANDING RWY 24				CIRCLE-TO-LAND			
MDA(H) 560' (425')				Not Authorized South of Rwy 06/24			
		ALS out		Max Kts	MDA(H)		
A				100	720' (580') - 2000m		
B	2000m		2400m	135	720' (580') - 2800m		
C				180	810' (670') - 3700m		
D	2400m		2800m	205	1300' (1160') - 4600m		

SAVT
ALMIRANTE ZARTRELEW, ARGENTINA
No. 4 VOR DME Rwy 06

				TRELEW Tower	
				118.7	
VOR TRE 115.1	Final Apch Crs 063°	Minimum Alt D9.0 2500' (2360')	MDA(H) 470' (330')	Apt Elev 140' Rwy 06 140'	<div>3000'</div> <div>MSA TRE VOR</div>
MISSED APCH: Climb on TRE VOR R-063 to 3000' and follow instructions from CONTROL.					
Alt Set: hPa Rwy Elev: 5 hPa Trans level: By ATC Trans alt: 3000'					
1. DME required.					

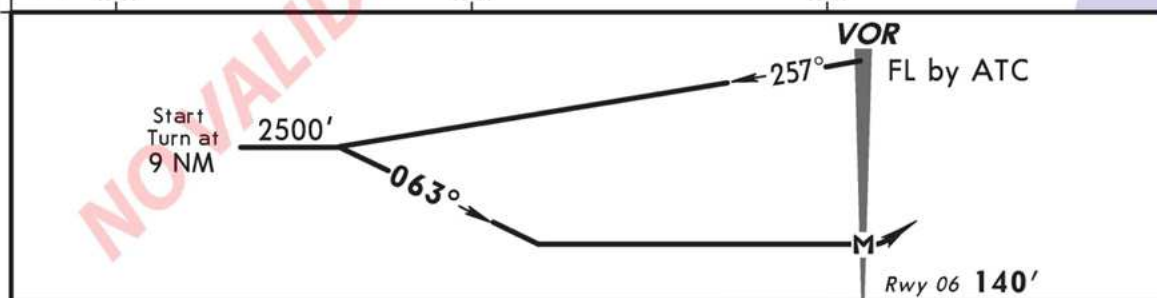
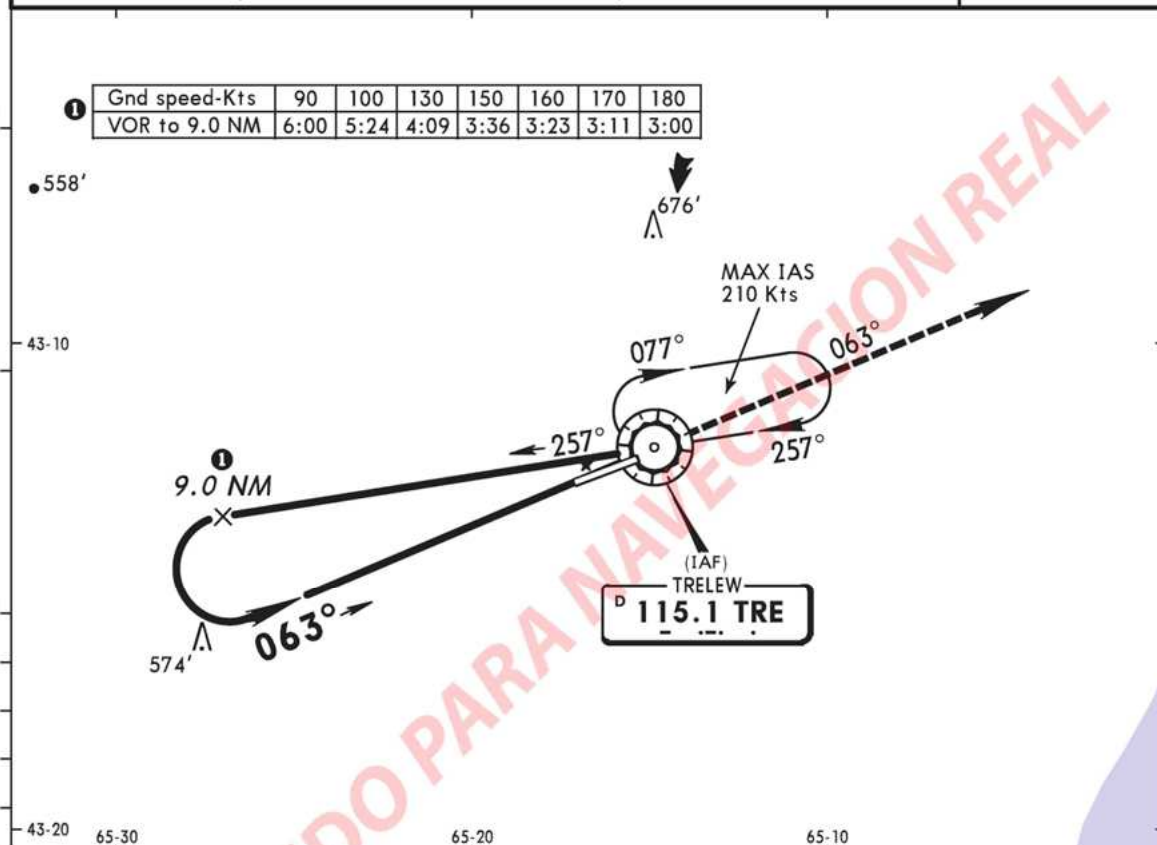


Gnd speed-Kts	70	90	100	120	140	160	3000' TRE on 115.1 R-063 ↑
MAP at D2.6 or D9.0 to MAP 6.4	5:29	4:16	3:50	3:12	2:45	2:24	

STRAIGHT-IN LANDING RWY 06		CIRCLE-TO-LAND	
MDA(H) 470' (330')		Not Authorized South of Rwy 06/24	
A	2000m	Max Kts	MDA(H)
B		100	720' (580')-2000m
C		135	720' (580')-2800m
D	2400m	180	810' (670')-3700m
		205	1300' (1160')-4600m

SAVT
ALMIRANTE ZARTRELEW, ARGENTINA
No. 5 VOR Rwy 06

				TRELEW Tower	
				118.7	
VOR TRE 115.1	Final Apch Crs 063°	No FAF	MDA(H) 720' (580')	Apt Elev 140' Rwy 06 140'	<div>3000'</div> <div>MSA TRE VOR</div>
MISSED APCH: Climb on TRE VOR R-063 to 3000' and follow instructions from CONTROL.					
Alt Set: hPa		Rwy Elev: 5 hPa	Trans level: By ATC	Trans alt: 3000'	



				3000' TRE on 115.1 R-063	
MAP at VOR					
STRAIGHT-IN LANDING RWY 06				CIRCLE-TO-LAND	
MDA(H) 720' (580')				Not Authorized South of Rwy 06/24	
A	2000m	Max Kts 100	MDA(H)	720' (580')-2000m	
B		135		720' (580')-2800m	
C	2800m	180		810' (670')-3700m	
D	3200m	205		1300' (1160')-4600m	